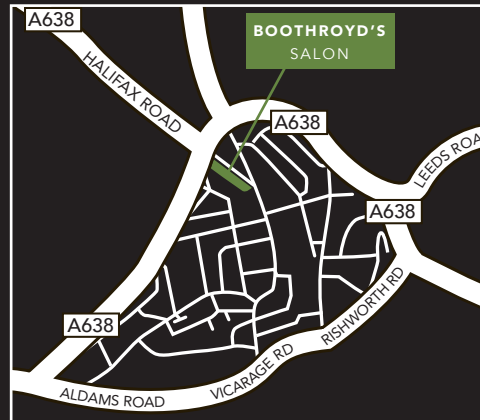


## TERMS AND CONDITIONS

The department of hair and beauty appreciates the assistance that models give to the students and every effort is made to simulate normal salon conditions. However, during the salon session the students are at all times in a learning situation and it is for this reason that the following rules must be strictly adhered to:

1. The students will take instruction only from the lecturer in charge.
2. The lecturer in charge will allocate models to students and therefore clients are not able to request specific students.
3. Children under the age of 16 years are not allowed in the salon.
4. Attendance must be prompt and for the duration of the lesson if necessary – a charge may be made if the client does not attend.
5. All colours must have a skin test at least 48 hrs prior to service and within one week of appointment.
6. Models should appreciate that services provided depend upon the availability and level of students' ability.
7. Models may be required to comply with the lesson schedule e.g. permanent wave winding, finger waving or pin curling, before the service booked.
8. It is important that models do not touch their hair or the student's equipment at any time whilst in the salon.
9. It is important that clients do not guide students as it may cause confusion.
10. The college has no responsibility for the loss of personal belongings whilst models are on the premises.
11. Appointments may be made by telephoning reception on 01484 503465 (Kirklees College, Huddersfield Centre).
12. Models should inform reception if they are unable to keep an appointment.
13. Models are not allowed to bring their own products e.g. shampoo, setting aids, beauty products into the salon, due to Health and safety regulations.
14. Food must not be consumed in the salons.
15. All mobile phones must be either switched off or on silent.
16. Services may take longer than usual so please allow plenty of time.



### BOOTHROYD SALON

Kirklees College, Pioneer Higher Skills Centre,  
Halifax Road, Dewsbury, WF13 1BD  
Tel: 01484 503465  
Email: Boothroyds@kirkleescollege.ac.uk

Or find us on Facebook:  
Hair and Beauty at  
Kirklees College, Dewsbury



## HAIRDRESSING SERVICES

---

### PRICE LIST

## LADIES HAIRDRESSING SERVICES

Shampoo, style & finish	£3.00
Ladies cut & finish	£7.00
Straightening or curling	£2.00
Deep penetrating conditioning treatment & finish	£4.00

## MENS HAIRDRESSING SERVICES

Gent's cut (incl. beard trim)	£3.00
Perming	£10.00 - £15.00
Cut throat razoring	£3.00

## CHEMICAL SERVICES (including style and finish)

Semi-permanent colour (incl. cut & blow dry)*	£15.00
Semi-permanent colour (incl. blow dry)*	£14.00
Quasi colour (incl. cut & blow dry)*	£14.00
Quasi colour (incl. blow dry)*	£10.00
Permanent full head colour (above shoulders) (incl. cut & blow dry)*	£20.00
Permanent full head colour (above shoulders) (incl. blow dry)*	£15.00
Permanent full head colour (below shoulders) (incl. cut & blow dry)*	£25.00
Permanent full head colour (below shoulders) (incl. blow dry)*	£20.00
Permanent regrowth colour (incl. cut & blow dry)*	£15.00
Permanent regrowth colour (incl. blow dry)*	£10.00
Cap highlights (incl. cut & blow dry)*	£15.00
Cap highlights (incl. blow dry)*	£10.00

---

Colour correction - prices on request with consultation

\*Skin tests must be booked in and conducted 48 hours before a colouring service. Failure to do so will unfortunately result in cancellation of appointment. Please see Reception. Thank you.

---

## HIGHLIGHTS WOVEN WITH EASI-MECHE OR FOILSY

Full head foils (above shoulders) (incl cut & blow dry)*	£20.00
Full head foils (above shoulders) (incl blow dry)*	£15.00
Full head foils (below shoulders (incl cut & blow dry)*	£25.00
Full head foils (above shoulders) (incl blow dry)*	£20.00
Half head (T-section) (incl cut & blow dry)*	£15.00
Half head (T-section) (incl blow dry)*	£10.00
Individual foils placed at £1 each (any colour)* Toner £4 on top of each service*	



## TERMS AND CONDITIONS

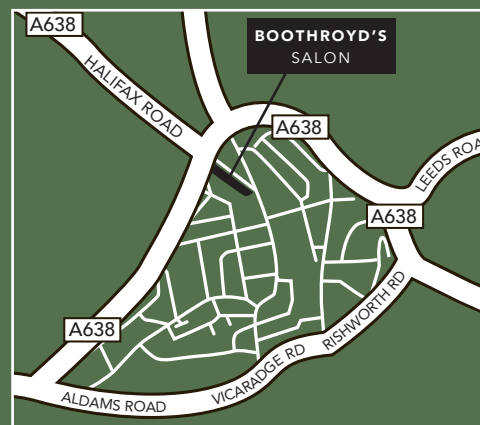
The department of Hair and Beauty appreciates the assistance that models give to the students and every effort is made to simulate normal salon conditions. However, during the salon session the students are at all times in a learning situation and it is for this reason that the following rules must be strictly adhered to:

1. The students will take instruction only from the lecturer in charge.
2. The lecturer in charge will allocate models to students and therefore clients are not able to request specific students.
3. Children under the age of 16 years are not allowed in the salon.
4. Attendance must be prompt and for the duration of the lesson if necessary - a charge may be made if the client does not attend.
5. A skin test **MUST** be given 48 hours prior to every tint or eyelash perm application.
6. Models should appreciate that services provided depend upon the availability and level of students' ability.
7. Models may be required to comply with the lesson schedule e.g. permanent wave winding, finger waving or pin curling, before the service booked.
8. It is important that models do not touch their hair or the student's equipment at any time whilst in the salon.
9. It is important that clients do not guide students as it may cause confusion.
10. The college has no responsibility for the loss of personal belongings whilst models are on the premises.
11. Appointments may be made by telephoning reception on 01924 465916 ext 2390 (Boothroyd's Salon).
12. Models should inform reception if they are unable to keep an appointment.
13. Models are not allowed to bring their own products e.g. shampoo, setting aids, beauty products into the salon, due to Health and Safety regulations.
14. Food must not be consumed in the salons.
15. All mobile phones must be either switched off or on silent.



### SANCTUARY SALON

Kirklees College, Huddersfield Centre,  
Manchester Road, Huddersfield, HD1 3LD  
Tel: 01484 437024



### BOOTHROYD'S SALON

Kirklees College, Pioneer Higher Skills Centre,  
Halifax Road, Dewsbury, WF13 1BD  
Tel: 01924 465916 ext. 2390



## BEAUTY & HOLISTIC THERAPY SERVICES

---

### PRICE LIST





## THE BODY

---

### Body Massage

This relaxing massage uses firm but gentle Swedish massage techniques to alleviate stress and tension within the body, leaving you feeling refreshed and revitalised. £12.50

Back Massage £6.00

## BODY TANNING

---

Receive a healthy, all over, sun kissed glow with an application of spray tan, gel or cream. For maximum effects we recommend that you exfoliate your body before your appointment, or let us do it for you. £8.00

## HANDS AND FEET

---

### Luxury Manicure

In addition to the basic manicure this plush therapy for beautiful hands, includes exfoliant, nourishing heat treatment and exotic mask. £8.00

### Luxury Pedicure

In addition to the basic pedicure this pure bliss treatment includes a skin softening heat treatment and nourishing foot mask – leaves you walking on air £8.00

## BODY ELECTRICALS

---

### Microdermabrasion

A mechanical exfoliation which removes dry, dull skin, improves uneven texture, targets stretch marks & hyper pigmentation to reveal smoother, softer, more even-looking skin. £10.00

### Galvanic Treatment

Uses a gentle direct electrical current which enhances skin texture, boosts circulation. Helps to reduce the appearance of cellulite, aids fluid retention & detoxification. £10.00

### Vacuum Suction (Ventouse Therapy)

A relaxing yet powerful treatment using controlled suction to stimulate blood flow & lymphatic drainage, detoxify the body, firm and tone the skin & help break down fat deposits and impurities £10.00

### Dermalift

A painless, non-surgical body lifting treatment that stimulates and re-educates muscles, lifts & contours targeted areas, firms & tightens the skin & improves overall body appearance with no downtime. £10.00

### Faradic / EMS (Electrical Muscle Stimulation)

A passive workout for the body that uses low-frequency currents to contract muscles, mimics the effects of an intense workout, tones & firms' muscles, enhances body contour & definition. £10.00

## FACIAL ELECTRICALS

---

### Microdermabrasion

Gently exfoliates the skin by removing dead surface cells, improving texture, brightening dull complexions, minimizing the appearance of fine lines, and allowing skin care products to penetrate more effectively for visible skin renewal. £10.00

### Microcurrent / EMS

Uses low-level electrical currents to stimulate facial muscles, improving firmness, lifting and toning the skin, enhancing facial contours, boosting circulation, and supporting collagen production for a more youthful appearance. £10.00

### High Frequency

Delivers a mild electrical current that increases oxygenation, kills acne-causing bacteria, reduces inflammation, calms redness, and stimulates circulation, promoting clearer skin and faster healing of blemishes. £10.00

### Galvanic

Employs positive and negative electrical currents to deeply cleanse pores, draw out impurities, enhance absorption of active ingredients, improve hydration, and support healthy circulation for revitalized, balanced skin. £10.00

### Vacuum Suction Facial

Uses controlled suction to lift the skin, stimulate blood flow and lymphatic drainage, remove impurities from pores, reduce congestion, improve circulation, and enhance skin tone for a refreshed, oxygenated complexion. £10.00



## THE WAX POT

---

To remove unwanted facial and body hair.

Full leg wax	£7.50
Half leg wax	£5.00
Underarm wax	£3.50
Bikini Wax	£4.00
Lip/chin wax	£3.00
Eyebrow wax	£3.00

## ELEGANT EYES

---

Enhance your natural eye beauty with one of our specialised treatments

Hollywood Lashes*	
Longer lasting individual lashes	£12.00
Eye Brow Shape - With Tweezers	
To add definition to the eye area	£2.50
False Eye Lashes*	
Extend and thicken your natural lashes	£4.00
Eye Brow Tint*	
To give colour and definition	£3.00
Eye Lash Tint*	£4.00

\*Clients must have a patch test 48 hours prior to treatment.

